

FNW™

PRODUCT PORTFOLIO

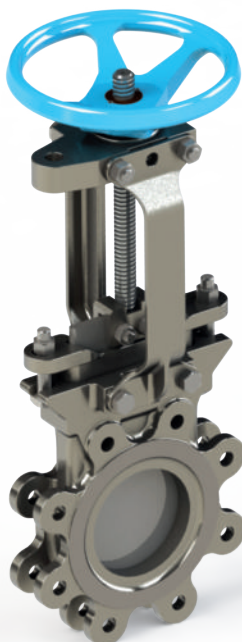


Table of Contents

Low Lead Products- Page 2 - 3 <i>Ball Valves, Check Valves, Strainers, Water Hammer Arrestors</i>	Gate, Globe & Check Valves, Cast Iron - Page 6 - 7 <i>Wafer Checks, 125# Flanged, Iron Body Bronze Mounted</i>
Ball Valves, Brass - Page 3 - 4 <i>Threaded, Sweat, Cap & Chain, Press, ISO Mount, 3-Way, Pump Isolation, Compression, Push Fit</i>	Butterfly Valves - Page 7 <i>Wafer, Lugged, Resilient Seated Cartridge, Large Diameter U-Body, High Performance</i>
Ball Valves, Steel - Page 4 - 5 <i>Carbon Steel, Stainless, Threaded, Socket Weld, ISO Mount, 3-Way, Sanitary, Flanged</i>	Piping Products - Page 7 - 8 <i>Water Hammer Arrestors, DI Back-Up Flanges, Flange Gaskets, Nut/Bolt/Gasket Kits, Bolt Kits, Isolators</i>
Thermoplastic Valves - Page 5 <i>UPVC, CPVC, Double Union Ball, Wafer Butterfly, Double Union Ball Check</i>	Fire & Fabrication Products - Page 8 <i>Riser Gauge Kits</i>
Knife Gate Valves - Page 5 <i>Resilient Seated, Metal Seated, Lined, High Performance, Transmitter Isolation, Fabricated</i>	Actuation & Accessories - Page 8 <i>Gear Operators, Pneumatic, Electric, Hydraulic, Quarter-Turn, Multi-Turn, Linear, Solenoids, Switches, Positioners</i>
Y-Strainers - Page 5 - 6 <i>Threaded, Sweat, Flanged, Bronze, Cast Iron, Stainless Steel</i>	Flexible Connectors - Page 8 <i>Threaded, Sweat, Flanged, Metal Braided, Single Sphere</i>
Gate, Globe & Check Valves, Brass & Bronze - Page 6 <i>Threaded, Sweat, Press, NRS Gate, RS Gate</i>	Gauges, Thermometers & Accessories - Page 8 <i>Pressure Gauges, Thermometers, Thermowells, Needle Valve, Pressure Snubbers, Test Plugs</i>
Gate, Globe & Check Valves, Cast Steel - Page 6 - 7 <i>Threaded, 150# & 300# Flanged, Carbon Steel, Stainless Steel</i>	Hangers, Clamps & Strut Accessories - Page 8 <i>Clevis, Loop, "J" & Split Ring Hangers, Riser, Pipe, & Beam Clamps, Attachments, Strut Clamps, Post Bases, Nuts, Fittings, Shields, Supports</i>









	Figure X410C / X411C LOW LEAD 2 PC FULL PORT 600 WOG BRASS BALL VALVE <ul style="list-style-type: none">• NPT (X410C), SWEAT (X411C)• 600 WOG• CSA RATED (X410C ONLY)• NSF 61 ANNEX G CERTIFIED• ADJUSTABLE PACKING• X410C SIZES 1/4" - 4"• X411C SIZES 3/8" - 3"		Figure X431 LOW LEAD 200 PSI PRESS CONNECTION BRASS IN-LINE CHECK VALVE FOR WATER <ul style="list-style-type: none">• HIGH CAPACITY DESIGN• LOW 1/2 PSI CRACKING PRESSURE• SOFT SEAT FOR TIGHT SHUTOFF• NSF 61 ANNEX G CERTIFIED• FORGED BODY & END CAP• SIZES 1/2" - 2"
	Figure X415 / X416 LOW LEAD 2 PC FULL PORT 600 WOG BRASS BALL VALVE <ul style="list-style-type: none">• NPT (X415), SWEAT (X416)• RATED 150 WSP• CSA RATED (X415 ONLY)• FM RATED TO 400 PSI (X415 ONLY)• NSF 61 ANNEX G CERTIFIED• DUAL O-RING PACKING• SIZES 1/4" - 4"		Figure X432 LOW LEAD 200 PSI PRESS CONNECTION BRASS BALL VALVE FOR WATER SERVICE <ul style="list-style-type: none">• ECONOMICAL DESIGN• FULL PORT• NSF 61 ANNEX G CERTIFIED• BLOW-OUT PROOF STEM• DUAL O-RING PACKING• SIZES 1/2"-2"
	Figure X420A / X421 LOW LEAD 2 PC FULL PORT 600 WOG BRASS BALL VALVE <ul style="list-style-type: none">• NPT (X420A), SWEAT (X421)• RATED 150 WSP• NSF 372 CERTIFIED• OPTIONAL LOCKING DEVICE, T-HANDLE, STEM EXTENSION, & MORE• SIZES 1/2" - 2" NPT		Figure X432AXLC LOW LEAD 200 PSI PRESS CONNECTION BRASS BALL VALVE FOR WATER SERVICE <ul style="list-style-type: none">• ECONOMICAL DESIGN• FULL PORT (4" IS STANDARD PORT)• NSF 61 ANNEX G CERTIFIED• BLOWOUT-PROOF STEM• DUAL O-RING PACKING• SIZES 2 1/2", 3", 4"
	Figure X430 LOW LEAD 200 PSI PRESS CONNECTION BRASS BALL VALVE FOR WATER SERVICE <ul style="list-style-type: none">• FULL PORT DESIGN• NSF 61 ANNEX G CERTIFIED• FORGED BODY & END CAP• BLOW-OUT PROOF STEM• ADJUSTABLE PACKING• SIZES 1/2" - 2"		Figure X440 LOW LEAD 2 PC FULL PORT 600 WOG ISO MOUNT BRASS BALL VALVE <ul style="list-style-type: none">• ISO 5211 MOUNTING PAD• RATED 150 WSP• O-RING BACKED SEATS• NSF 61 ANNEX G CERTIFIED• DOUBLE O-RING VITON® PACKING• SIZES 1/2" - 2"



Figure X480A
LOW LEAD 2 PC STANDARD
PORT 400 WOG VALVE w/
COMPRESSION ENDS

- DRAIN & CAP
- NSF 372 CERTIFIED
- ADJUSTABLE PACKING
- SIZES 1/2", 3/4" & 1"



Figure X485A
LOW LEAD FULL PORT 200 PSI
PUSH FIT VALVE FOR WATER OR
AIR

- FOR COPPER, CPVC, & PEX PIPE
- INCLUDES REMOVAL TOOL
- NSF 372 CERTIFIED
- SIZES 1/2", 3/4" & 1"



Figure X509 / X510
LOW LEAD BRONZE Y-STRAINER

- FNPT (X509), SWEAT (X510)
- 400 WOG
- 150 PSI SWP
- NSF 61 ANNEX G CERTIFIED
- CAST BRONZE BODY
- 20 MESH STAINLESS STEEL SCREEN
- BLOW-OFF PLUG INCLUDED
- SIZES 1/2" - 2"



Figure X10P / X11P
LOW LEAD WATER HAMMER
ARRESTOR

- MALE NPT (X10P), COPPER SWEAT (X11P)
- 150 PSI MAX STATIC WORKING PRESSURE
- 350 PSI MAX SPIKE PRESSURE
- LEAD FREE CERTIFIED
- SIZES 1/2" - 2" NPT, 1/2" - 1 1/4" SWEAT
- PDI CERTIFIED



Gauges
LOW LEAD COMPLIANT
LIQUID FILLED & MECHANICAL
CONTRACTOR'S PRESSURE
GAUGES

- COMPLIES WITH FEDERAL LEAD FREE LAWS
- 2 1/2" LIQUID FILLED (GLYCERIN)
- 4 1/2" MECHANICAL CONTRACTOR'S
- RANGES FROM 0-30 PSI TO 0-300 PSI



Gauges
LOW LEAD COMPLIANT BRASS
GAUGE ACCESSORIES

- COMPLIES WITH FEDERAL LEAD FREE LAWS
- NEEDLE VALVES
- PRESSURE SNUBBER/FILTERS
- P/T TEST PLUGS
- THERMOWELLS



Figure 410A
2 PC FULL PORT 600 WOG BRASS
BALL VALVE

- NPT
- RATED 150 WSP
- FM, UL, CSA RATED (410A ONLY)
- OPTIONAL LOCKING DEVICE, T-HANDLE, STEM EXTENSION, & MORE
- SIZES 1/4" - 4"



Figure 420 / 421
2 PC FULL PORT 600 WOG BRASS
BALL VALVE

- NPT (420), SWEAT (421), RATED 150 WSP
- FIG. 420 - FM, UL, CSA & GAS RATED
- FIG. 420 - OPTIONAL SS TRIM
- OPTIONAL LOCKING DEVICE, T-HANDLE, STEM EXTENSION, & MORE
- SIZES 1/4" - 4" NPT, 1/2" - 4" SWEAT



Figure 426A / 427A / 428A
2 PC FULL PORT 600 WOG 3/4"
HOSE CONNECTION BRASS BV

- 3/4" HOSE CONNECTION
- FULL PORT
- WITH FNPT END (426A), SWEAT END (427A), MNPT (428A)
- INCLUDES CAP, CAP GASKET, & CHAIN
- FORGED BRASS BODY & END CAP
- SIZES 1/2" & 3/4"



Figure 435
125 PSI PRESS CONNECTION
BRASS BALL VALVE FOR GAS
SERVICE

- FULL PORT DESIGN
- CSA RATED
- FORGED BODY & END CAP
- ADJUSTABLE PACKING
- SIZES 1/2" - 2"



Figure 430
200 PSI PRESS CONNECTION
BRASS BALL VALVE FOR WATER
SERVICE

- FULL PORT DESIGN
- FM & UL RATED
- FORGED BODY & END CAP
- BLOW-OUT PROOF STEM
- ADJUSTABLE PACKING
- SIZES 1/2"-4", 2 1/2" - 4" XLC ENDS



Figure 440
2 PC FULL PORT 600 WOG ISO
MOUNT BRASS BALL VALVE

- ISO 5211 MOUNTING PAD
- RATED 150 WSP
- O-RING BACKED SEATS
- DOUBLE O-RING VITON® PACKING
- FOR DIRECT MOUNT ACTUATION
- SIZES 2 1/2" - 4"



Figure 455 / 465
3-WAY 400 WOG ISO MOUNT
BRASS BALL VALVE

- T-PORT (455) & L-PORT (465)
- ISO 5211 MOUNTING PAD (WITH HANDLE)
- RATED 100 WSP
- O-RING BACKED SEATS
- DOUBLE O-RING VITON® PACKING
- FOR DIRECT MOUNT ACTUATION
- SIZES 1/4" - 2"



Figure 470 / 475
2 PC FULL PORT 400 WOG PUMP
ISOLATION BALL VALVE

- INTEGRAL PUMP FLANGE CONNECTION
- FULL PORT DESIGN
- FNPT END (470), SWEAT END (475)
- INCLUDES T-HANDLE, GASKET & BOLTS
- EASES PUMP INSTALL & REMOVAL
- SIZES 3/4" - 1 1/2"



Figure 480A
2 PC STANDARD PORT 400 WOG
VALVE w/ COMPRESSION ENDS

- DRAIN & CAP
- FORGED BRASS BODY & END CAP
- BLOW-OUT PROOF STEM
- ADJUSTABLE PACKING
- SIZES 1/2", 3/4" & 1"



Figure 485
FULL PORT 200 PSI PUSH FIT VALVE FOR WATER OR AIR
 • FOR COPPER, CPVC, & PEX PIPE
 • EASY INSTALL AND REMOVAL
 • INCLUDES REMOVAL TOOL
 • BLOW-OUT PROOF STEM
 • ADJUSTABLE PACKING
 • SIZES 1/2", 3/4" & 1"



Figure 490 / 495
2 PC FULL PORT 600 WOG PUMP ISOLATION BALL VALVE w/ ROTATING FLANGE
 • INTEGRAL ROTATING PUMP FLANGE CONNECTION
 • FNPT END (490), SWEAT END (495)
 • INCLUDES T-HANDLE (EXCEPT 1 1/2"), GASKET & BOLTS
 • SIZES 3/4" - 1 1/2"



Figure 490D / 495D
2 PC FULL PORT 600 WOG PUMP ISOLATION BALL VALVE w/ ROTATING FLANGE & DRAIN
 • INTEGRAL ROTATING PUMP FLANGE CONNECTION & ON/OFF DRAIN
 • FNPT END (490D), SWEAT END (495D)
 • INCLUDES T-HANDLE, GASKET & BOLTS
 • SIZES 3/4" - 1 1/4"



Figure 100A
1 PC STANDARD PORT 1000 CWP STAINLESS STEEL BALL VALVE
 • INVESTMENT CAST BODY
 • 150 PSI WSP
 • SS LOCKING HANDLE
 • RTFE SEATS
 • BLOW-OUT PROOF STEM
 • SIZES 1/4" - 2"



Figure 200A
2 PC FULL PORT 1000 CWP STAINLESS STEEL BALL VALVE
 • INVESTMENT CAST BODY & END CAP
 • 150 PSI WSP
 • SS LOCKING HANDLE
 • RTFE SEATS
 • BLOW-OUT PROOF STEM
 • SIZES 1/4" - 2"



Figure 220A / 220AC - SSxSS
Figure 221A / 221AC - CSxSS
2 PC FULL PORT 2000 CWP BALL VALVE
 • INVESTMENT CAST BODY & END CAP
 • 150 PSI WSP (220A/221A)
 • 250 PSI WSP (220AC/221AC)
 • SS LOCKING HANDLE
 • TFM SEATS
 • SIZES 1/4" - 3"



Figure 220AM
2 PC FULL PORT 2000 CWP ISO MOUNT SS BALL VALVE
 • ISO 5211 MOUNTING PAD
 • 150 PSI WSP
 • LIVE LOADED PACKING
 • INVESTMENT CAST BODY & END CAP
 • TFM SEATS
 • FOR DIRECT MOUNT ACTUATION
 • SIZES 1/4" - 3"



Figure 220SE
2 PC FULL PORT 150 PSI SAFETY EXHAUST BALL VALVE
 • VENTS DOWNSTREAM PRESSURE IN CLOSED POSITION
 • INVESTMENT CAST BODY & END CAP
 • 150 PSI MAXIMUM PRESSURE
 • NON-VENTED BALL
 • SS LOCKING HANDLE
 • RTFE SEATS
 • SIZES 3/4" - 1 1/2"



Figure 233A
3-WAY DIVERTER 1000 CWP STAINLESS STEEL BALL VALVE
 • STANDARD PORT
 • 150 PSI WSP
 • RTFE SEATS
 • SS LOCKING HANDLE
 • BLOW-OUT PROOF STEM
 • ISO 5211 MOUNTING PAD
 • SIZES 1/2" - 2"



Figure 260A
2 PC FULL PORT STAINLESS STEEL BALL VALVE 1000 WOG
 • 150 PSI/WSP
 • WORKING TEMP: -4°F - 392°F
 • INVESTMENT CAST BODY
 • BLOW-OUT PROOF STEM
 • STAINLESS HANDLE
 • LOCKING LEVER
 • SIZES 1/4" - 2"



Figure 360A
3 PC FULL PORT STAINLESS STEEL BALL VALVE 1000 WOG
 • 150 PSI/WSP
 • WORKING TEMP: -4°F - 392°F
 • INVESTMENT CAST BODY
 • BLOW OUT PROOF STEM
 • ISO 5211 MOUNTING PAD
 • STAINLESS STEEL HANDLE
 • LOCKING LEVER
 • SIZES 1/4" - 3"



Figure 310A - SSxSS
Figure 311A - CSxSS
3 PC FULL PORT 1000 CWP BALL VALVE
 • INVESTMENT CAST BODY & END CAPS
 • 150 PSI WSP
 • NPT ENDS (OPTIONAL SOCKET WELD)
 • SS LOCKING HANDLE
 • RTFE SEAT
 • SIZES 1/4" - 3"



Figure 310AM - SSxSS
Figure 311AM - CSxSS
3 PC FULL PORT 1000 CWP ISO MOUNT SS BALL VALVE
 • ISO 5211 MOUNTING PAD
 • 150 PSI WSP
 • LIVE LOADED PACKING
 • INVESTMENT CAST BODY & END CAPS
 • NPT ENDS (OPTIONAL SOCKET WELD)
 • SIZES 1/4" - 4" (4" INCLUDES HANDLE)



Figure 320A / 320AC - SSxSS
Figure 321A / 321AC - CSxSS
3 PC FULL PORT 2000 CWP BALL VALVE
 • 150 PSI WSP (320A/321A)
 • 250 PSI WSP (320AC/321AC)
 • NPT END (OPTIONAL SOCKET WELD)
 • SS LOCKING HANDLE
 • TFM SEATS
 • SIZES 1/4" - 2"



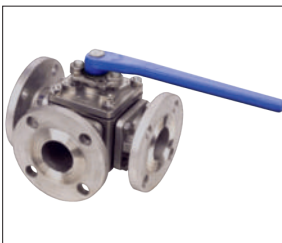
Figure 330A
SANITARY 3 PC FULL PORT 400 CWP SS BALL VALVE
 • CLAMP ENDS
 • 150 PSI WSP
 • CAVITY FILLED SEATS
 • ISO 5211 MOUNTING PAD
 • SS LOCKING HANDLE
 • TFM SEATS
 • SIZES 1/2" - 4"



Figure 500B - SSxSS
Figure 501B - CSxSS
1 PC STANDARD PORT 150# FLANGED BALL VALVE
 • INVESTMENT CAST BODY
 • ANTI-STATIC DESIGN
 • TFM SEATS
 • ISO MOUNTING PAD
 • SIZES 2" - 6"
Figure 500C & 501C
 • Fire Safe



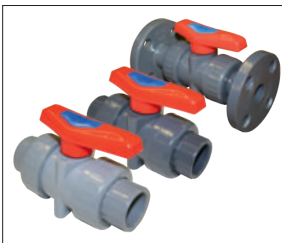
**Figure 600B - SSxSS
Figure 601B - CSxSS
2 PC FULL PORT
150# FLANGED BALL VALVE**
• INVESTMENT CAST BODY
• ANTI-STATIC DESIGN
• TFM Seats
• ISO MOUNTING PAD
• SIZES 1/2" - 8"
Figure 600C & 601C
• Fire Safe



**Figure 633 / 634
3-WAY 150# FLANGED
STAINLESS STEEL BALL VALVE**
• L-PORT (633) & T-PORT (634)
• FULL PORT SPLIT BODY
• RTFE SEATS
• TOP ENTRY, TRUNNION MOUNTED
• ACTUATOR MOUNTING PAD
• SIZES 2" - 8"



**Figure 660A
2 PC FULL PORT 150# FLANGED
ECONOMY BALL VALVE**
• INVESTMENT CAST BODY
• ANTI-STATIC DESIGN
• RTFE SEATS
• ISO MOUNTING PAD
• SIZES 2" - 6"



**Figure 340N / 340NF / 350N
THERMOPLASTIC FULL PORT
TRUE UNION BALL VALVE**
• PVC (340N/340NF) & CPVC (350N)
• BOTH NPT & SW ENDS (UP TO 2")
• ABOVE 2" IN SW (NPT ON REQUEST)
• NSF 61 ANNEX G CERTIFIED
• FULL PORT BI-DIRECTIONAL DESIGN
• PTFE SEATS, EPDM OR VITON® SEALS
• SIZES 1/2" - 4"



**Figure 721
THERMOPLASTIC WAFER
BUTTERFLY VALVE**
• 150 PSI TO 10", 100 PSI TO 12"
• COMPACT DESIGN
• BUBBLE-TIGHT SHUTOFF
• EPDM OR VITON® SEAT/SEALS
• CAN BE EASILY ACTUATED
• SIZES 2" - 12"



**Figure 345 - PVC
Figure 355 - CPVC
THERMOPLASTIC DOUBLE
UNION BALL CHECK VALVE**
• BOTH NPT & SW ENDS
• 150 PSI MAX. WORKING PRESSURE
• 5 PSI MINIMUM SHUTOFF
• FOR VERTICAL INSTALLATION
• EASY MAINTENANCE
• SIZES 1/2" - 2"



**Figure 61B
LINED KNIFE GATE VALVE,
METAL SEATED**
• CAST DI BODY/SS LINED
• METAL SEAT
• SS WETTED PARTS
• UNI-DIRECTIONAL SHUTOFF
• ECONOMY VALVE FOR MANY APPLICATIONS
• SIZES 3" - 24"



**Figure 62B
LINED KNIFE GATE VALVE,
RESILIENT SEATED**
• CAST DI BODY/SS LINED
• POSITIVE SHUTOFF RESILIENT SEAT
• SS WETTED PARTS
• UNI-DIRECTIONAL SHUTOFF
• ECONOMY VALVE FOR MANY APPLICATIONS
• SIZES 3" - 24"



**Figure 6500
CAST SS KNIFE GATE VALVE,
METAL SEATED**
• CAST SS BODY/YOKE/FOLLOWER
• INTEGRAL METAL SEAT
• UNI-DIRECTIONAL SHUTOFF
• DESIGNED FOR HEAVY MEDIA
• GATE EDGE RADIUS
• ANTI-EXTRUSION RING IN PACKING
• ELASTOMER QUAD SEAL IN PACKING
• SIZES 2" - 24"



**Figure 6701
CAST SS KNIFE GATE VALVE,
METAL SEATED**
• CAST SS BODY AND FOLLOWER
• INTEGRAL METAL SEAT
• CARBON STEEL & IRON TOPWORKS
• UNI-DIRECTIONAL SHUTOFF
• DESIGNED FOR HEAVY MEDIA
• NON-CLOGGING STEP SEAT DESIGN
• SIZES 3" - 30"



**Figure 6800
CAST SS KNIFE GATE VALVE,
RESILIENT SEAT**
• CAST SS BODY/YOKE/FOLLOWER
• POSITIVE SHUTOFF RESILIENT SEAT
EVEN AT LOW MEDIA PRESSURES
• BI-DIRECTIONAL SHUTOFF
• STAINLESS NEEDLE BEARING FOR
REDUCED HW TORQUE
• ANTI-EXTRUSION STRIPS IN PACKING
• SIZES 3" - 30"



**Figure 2020
HIGH PERFORMANCE
KNIFE GATE VALVE**
• CAST SS BODY/YOKE/FOLLOWER
• O-RING ENERGIZED REINFORCED
TEFLON RESILIENT SEATS
• BI-DIRECTIONAL SHUTOFF
• STAINLESS NEEDLE BEARING FOR
REDUCED HW TORQUE
• ELASTOMER QUAD SEAL IN PACKING
• SIZES 2" - 24"



**Figure 60R
KNIFE GATE VALVE FOR
ABRASIVE APPLICATIONS**
• CAST CS BODY/YOKE/FOLLOWER
• RESILIENT SEAT
• POP-OUT SLEEVE-LINED
• BI-DIRECTIONAL SHUTOFF
• UP TO 100 PSI CWP
• SIZES 3" - 30"



**Figure FNW2020TIVTM
TRANSMITTER ISOLATION
VALVE**
• CAST SS BODY/YOKE/FOLLOWER
• FLEX TEFLON RESILIENT SEATS
• BI-DIRECTIONAL SHUTOFF
• RATCHET OPERATOR
• TANK SIDE FLANGE ACCESS
• SIZE 3"



**F-Series
FABRICATED SLIDE &
KNIFE GATE VALVES
FABRICATION CAPABILITIES FOR:**
• CUSTOM MATERIALS
• CUSTOM PRESSURE RATINGS
• CUSTOM SIZES
• F150 SLIDE GATE OPTION
• F65 AND F68 KNIFE GATE OPTION
• CUSTOM CONFIGURATIONS



**Figure 509 / 510
BRONZE Y-STRAINER**
• 250 WOG, 150 PSI STEAM (509)
• 400 WOG, 250 PSI STEAM (510)
• 510 IS 400 WOG, 250 PSI STEAM
• CAST BRONZE BODY
• 20 MESH STAINLESS STEEL SCREEN
• BLOW-OFF PLUG INCLUDED
• SIZES 3/8" - 2" (509);
SIZES 1/2" - 2" (510)



**Figure 558A / 559
CAST IRON Y-STRAINER**

- 125# FLANGED ENDS (558A) & FNPT ENDS (559)
- 200 WOG, 125 PSI STEAM (558A)
- 400 WOG, 250 PSI STEAM (559)
- STAINLESS STEEL SCREEN
- SIZES 2" - 12" (558A); SIZES 1/2" - 2 1/2" (559) (2 1/2" IS BOLTED END BONNET)



**Figure 14B-YSS
THREADED SS 800 PSI CWP
Y-STRAINER**

- SS 20 MESH SCREEN
- VITON® O-RING SEAL
- SIZES 1/2" - 2"



**Figure 1211 / 1212
NRS 125# BRONZE GATE VALVE**

- 200 CWP
- 125 PSI STEAM RATED (1211 ONLY)
- SOLID WEDGE DISC
- FNPT (1211) & SWEAT (1212) ENDS
- BACK SEAT DESIGN
- CONFORMS TO MSS SP-80
- SIZES 1/4" - 3" (1211); SIZES 1/2" - 3" (1212)



**Figure 1221 / 1222
RS 125# BRONZE GATE VALVE**

- 200 CWP
- 125 PSI STEAM RATED (1221 ONLY)
- SOLID WEDGE DISC
- FNPT (1221) & SWEAT (1222) ENDS
- BACK SEAT DESIGN
- CONFORMS TO MSS SP-80
- SIZES 1/2" - 3"



**Figure 1231 / 1232
125# BRONZE GLOBE VALVE**

- 200 WOG
- 125 PSI STEAM RATED (1231 ONLY)
- RESILIENT SEAT DISC
- FNPT (1231) & SWEAT (1232) ENDS
- CONFORMS TO MSS SP-80
- SIZES 1/4" - 3" (1231); SIZES 1/2" - 2" (1232)



**Figure 1241 / 1242
150# Y-PATTERN BRONZE SWING
CHECK VALVE**

- 300 WOG
- 150 PSI SATURATED STEAM RATED
- RESILIENT SEAT DISC
- FNPT (1241) & SWEAT (1242) ENDS
- CONFORMS TO MSS SP-80
- SIZES 1/2" - 3"



**Figure 431
200 PSI PRESS CONNECTION
BRASS IN-LINE CHECK VALVE
FOR WATER**

- HIGH CAPACITY DESIGN
- LOW 1/2 PSI CRACKING PRESSURE
- SOFT SEAT FOR TIGHT SHUTOFF
- NSF-61 APPROVED
- FORGED BODY & END CAP
- SIZES 1/2" - 2"



**Figure 15B-200
THREADED SS 200 WOG
NON-RISING STEM GATE VALVE**

- STAINLESS STEEL TRIM
- ADJUSTABLE PACKING
- SIZES 1/2" - 2"



**Figure 16B-200
THREADED SS 200 WOG
SWING CHECK VALVE**

- STAINLESS STEEL TRIM
- PTFE SEALS
- SIZES 1/4" - 2"



**Figure 17B-200
THREADED SS 200 WOG
GLOBE VALVE**

- STAINLESS STEEL TRIM
- ADJUSTABLE PACKING
- SIZES 1/2" - 2"



**Figure 451A / 452A - SS
Figure 551 / 552 - CS
FLANGED OS&Y WEDGE
GATE VALVE**

- 150# FLANGES (451A/551)
- 300# FLANGES (452A/552)
- API 600 (CS), API 603 (SS)
- INVESTMENT CAST TO 8" (SS ONLY)
- FLEX WEDGE DESIGN FOR POSITIVE SHUTOFF



**Figure 461A / 462A - SS
Figure 561 / 562 - CS
FLANGED GLOBE VALVE**

- 150# FLANGES (461A/561)
- 300# FLANGES (462A/562)
- API 600 (CS), API 603 (SS)
- INVESTMENT CAST TO 8" (SS ONLY)
- MODIFIED PLUG TYPE DISC FOR HAND OPERATED THROTTLING



**Figure 471A / 472A - SS
Figure 571 / 572 - CS
FLANGED SWING CHECK VALVE**

- 150# FLANGES (471A/571)
- 300# FLANGES (472A/572)
- API 600 (CS), API 603 (SS)
- MACHINED DISC & SEAT FOR TIGHT SHUTOFF



**Figure 681
200 PSI CAST IRON WAFER
SILENT CHECK VALVE**

- 200 PSI NON-SHOCK
- RESILIENT SEAT
- NON-SLAM STAINLESS STEEL SPRING ACTUATED
- ALUMINUM-BRONZE DISC
- SIZES 2" - 10"



**Figure 682
200 PSI CAST IRON WAFER
DOUBLE DOOR CHECK VALVE**

- 200 PSI NON-SHOCK
- RESILIENT SEAT
- NON-SLAM STAINLESS STEEL SPRING ACTUATED
- STAINLESS STEEL DISCS
- SIZES 2" - 10"



**Figure 651A / 661 / 671A
125# IRON BODY, BRONZE
MOUNTED VALVE**

- IBBM GATE (651A), GLOBE (661), & CHECK (671A) VALVES
- 125 PSI SWP (SATURATED TO 353°F)
- DESIGN AND TESTED TO:
 - GATES: MSS SP-70
 - GLOBES: MSS SP-85
 - CHECKS: MSS SP-71



- Figure 711 / 712
RESILIENT SEATED
BUTTERFLY VALVES**
- WAFER (711) & LUGGED (712)
 - RATED TO 200 PSI (14" & UP - 150 PSI)
 - ALUMINUM BRONZE DISC
 - 416SS STEM
 - ISO 5211 MOUNTING PAD
 - 2 PC PINLESS STEM
 - CARTRIDGE STYLE SEAT
 - SIZES 2" - 24"



- Figure 731 / 732
RESILIENT SEATED
BUTTERFLY VALVES**
- WAFER (731) & LUGGED (732)
 - RATED TO 255 PSI (14" & UP - 188 PSI)
 - 316SS DISC & STEM STANDARD
 - ISO 5211 MOUNTING PAD
 - 2 PC PINLESS STEM
 - CARTRIDGE STYLE SEAT
 - SIZES 2" - 24"



- Figure 752
LARGE DIAMETER U-BODY
RESILIENT SEATED BUTTERFLY
VALVES**
- RATED TO 150 PSI
 - CARTRIDGE SEAT DESIGN
 - DUCTILE IRON OR STAINLESS STEEL DISC
 - EPDM OR NBR (BUNA) SEAT
 - SIZES 28" - 48"



- Figure 761 / 762
PTFE SEATED
BUTTERFLY VALVES**
- WAFER (761) & LUGGED (762)
 - RATED TO 150 PSI
 - 316SS DISC & STEM STANDARD
 - ISO 5211 MOUNTING PAD
 - 1 PC DISC/STEM ASSEMBLY
 - BOOT STYLE SEAT
 - GEAR-OP STANDARD ON 8" - 12"
 - SIZES 2" - 12"



- Figure HPA
HIGH PERFORMANCE RESILIENT
SEATED BUTTERFLY VALVES**
- MRTFE SEATS
 - DOUBLE OFF-SET DESIGN
 - WAFER OR LUGGED CONNECTIONS
 - SS OR CS BODY
 - ISO TOPWORKS
 - GEAR STANDARD (6" - 24")
 - SIZES 3" - 24"



- Figure 10P / 11P
WATER HAMMER ARRESTOR**
- MALE NPT (10P)
 - COPPER SWEAT (11P)
 - 150 PSI MAX STATIC WORKING PRESSURE
 - 350 PSI MAX SPIKE PRESSURE
 - FOR NON-POTABLE WATER APPLICATIONS
 - PDI Certified
 - SIZES 1/2" - 2" NPT, 1/2" - 1 1/4" SWEAT



- Figure 72 / 73
IPS DUCTILE IRON BACK-UP
FLANGES**
- STUB END (72)
 - ANGLE FACE RING (73)
 - 150# DRILLING
 - IPS SIZES
 - RED PRIMER OR HOT DIPPED GALVANIZED
 - SIZES 1" - 24"



- Figure NA / R / NE
FLANGE GASKETS**
- NON-ASBESTOS (NA), RED RUBBER (R), & NEOPRENE (NE)
 - 150# & 300#
 - RING & FULL FACE (NE FF ONLY)
 - 1/16" & 1/8" THICK (NE 1/8" ONLY)
 - SIZES 1/2" - 24"



- Figure NGB
NUT / BOLT / GASKET KITS**
- NON-ASBESTOS, RED RUBBER, & NEOPRENE KITS
 - RING & FULL FACE
 - CARBON & STAINLESS STEEL NUT & BOLT MATERIALS
 - SIZES VARY PER CONFIGURATION



- Figure LBB / WBB / NBS
PRE-PACKAGED NUT & BOLT
SETS**
- LUGGED BUTTERFLY (LBB), WAFER BUTTERFLY (WBB), & FLANGE NUT/ BOLT SETS (NBS)
 - HARDWARE FOR 1 VALVE OR FLANGE CONNECTION
 - MATERIAL & CLASSES VARY PER CONFIGURATION
 - SIZES VARY PER CONFIGURATION



- Figure B7
B7/2H STUD & NUTS SETS**
- CARBON STEEL
 - ASTM A193 GRADE B7 STUDS
 - ASTM A194 GRADE 2H NUTS (2/STUD)
 - DIMENSIONS PER
 - ASME B1.1 UNC (UNC8) CLASS 2A
 - ASME B18.2.2
 - DIAMETERS 1/2" - 1 1/2"
 - LENGTHS 2 1/2" - 9"



- Figure B7K
B7/2H PRE-PACKAGED FLANGE
KITS**
- ASTM A193 GRADE B7 STUDS
 - ASTM A194 GRADE 2H NUTS (2/STUD)
 - DIMENSIONS PER
 - ASME B1.1 UNC (UNC8) CLASS 2A
 - ASME B18.2.2
 - 150# & 300# FLANGES
 - SIZES 1/2" - 12"



- Figure ABFBK
AQUATHERM BUTTERFLY
FLANGE BOLT KIT**
- BOLTS: ASTM A307A GRADE A
 - NUTS: SAE J995 GRADE 2
 - WASHERS: ASME B18.22.1
 - SIZES 2"-24"



- Figure ABKFAFA
AQUATHERM FLANGE ADAPTER
TO FLANGE ADAPTER BOLT KIT**
- BOLTS: ASTM A307A GRADE A
 - NUTS: SAE J995 GRADE 2
 - WASHERS: ASME B18.22.1
 - SIZES 1" - 24" (EXCLUDING 3 1/2" & 22")



- Figure ABKFAFLG
AQUATHERM FLANGE
ADAPTER TO FLANGE BOLT KIT**
- BOLTS: ASTM A307A GRADE A
 - NUTS: SAE J995 GRADE 2
 - WASHERS: ASME B18.22.1
 - SIZES 1" - 24" (EXCLUDING 3 1/2" & 22")



- Piping Products
BOLT INSULATORS**
- REINFORCED NYLON 66 RESIN
 - WHITE
 - SOLD INDIVIDUALLY
 - SIZES 1/2", 5/8", & 3/4"



**Figure 9101
RISER GAUGE KITS**

- COMPONENTS FOR INSTALLING A SPRINKLER GAUGE
- CONTRACTOR'S GAUGE, NIPPLE, DUAL OUTLET 400 WOG BRASS VALVE, REDUCER, & PIPE PLUG
- PLAIN (9101P) OR GALVANIZED (9101G) PIPE NIPPLE
- 1/4" CONNECTIONS



**Actuation & Accessories
MANUAL GEAR OPERATORS**

- WORM GEARS FOR QUARTER-TURN
- BEVEL GEARS FOR LINEAR MOVEMENT
- VARIOUS SIZES
- AVAILABLE WITH ISO 5211 MOUNTING FOR DIRECT MOUNT VALVES
- MACHINED MOUNTING ADAPTATION ALSO AVAILABLE



**Actuation & Accessories
PNEUMATIC ACTUATORS**

- CYLINDER (PNEUMATIC & HYDRAULIC)
- RACK & PINION
- SCOTCH YOKE
- DOUBLE-ACTING
- SPRING-RETURN



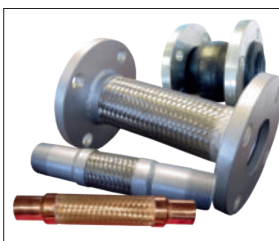
**Actuation & Accessories
ELECTRIC VALVE ACTUATORS**

- QUARTER-TURN DESIGN
- VARIOUS NEMA CLASSES
- MULTIPLE VOLTAGES AVAILABLE
- DOUBLE-ACTING (STAY IN LAST POSITION) & SPRING-RETURN DESIGNS
- MULTI-TURN & LARGE BODY ELECTRIC ACTUATORS AVAILABLE ON REQUEST



**Actuation & Accessories
ACTUATOR CONTROLS**

- SOLENOIDS
 - 3-WAY & 4-WAY CONFIGURATIONS
 - VARIOUS CLASSES & VOLTAGES
- POSITION / LIMIT SWITCHES
 - MECHANICAL
 - PROXIMITY
- POSITIONERS
 - 3-15 PSI & 4-20 mA SIGNAL
 - DIGITAL, SMART, HART®



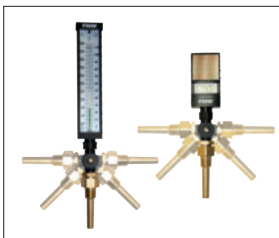
**Figure 30F / 30T / 35S / 40A
FLEXIBLE CONNECTORS**

- METAL BRAIDED ANNULAR
 - STAINLESS INNER HOSE (30F, 30T)
 - BRONZE INNER HOSE (35S)
 - SIZES 1/2" - 10" (30F), 1/2" - 2" (30T), 3/4" - 2" (35S)
- SINGLE SPHERE
 - 150# CARBON STEEL FLANGES
 - WIRE AND FABRIC REINFORCED
 - SIZES 2 1/2" - 10"



**Gauges
LIQUID FILLED & MECHANICAL
CONTRACTOR'S PRESSURE
GAUGES**

- 2 1/2" LIQUID FILLED (GLYCERIN)
- 4 1/2" MECHANICAL CONTRACTOR'S
- PRESSURE RANGES FROM 0-30 PSI TO 0-300 PSI



**Gauges
ADJUSTABLE ANGLE
THERMOMETERS**

- LIQUID FILLED THERMOMETER
 - RANGES 0-120, 0-160 OR 30-240 °F
 - ADJUSTABLE TO 20 POSITIONS
 - GREEN KEROSENE FILLED
- DIGITAL SOLAR THERMOMETER
 - -50 TO 320 °F RANGE
 - FIELD SELECTABLE °F OR °C DISPLAY



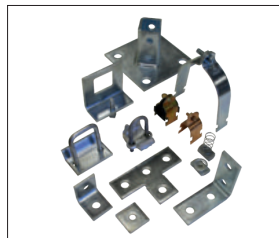
**Gauges
BRASS GAUGE ACCESSORIES**

- NEEDLE VALVES
- PRESSURE SNUBBER/FILTERS
- P/T TEST PLUGS
- THERMOWELLS



**Piping Products
PIPE HANGERS**

- MALLEABLE IRON & STEEL
- CLEVIS, LOOP, ROLLER, & "J" HANGERS
- RISER, PIPE & BEAM CLAMPS
- ATTACHMENT BRACKETS
- PLAIN, ZINC & COPPER FINISH (MI)
- EPOXY PLATED (STEEL)
- U-BOLTS IN PLAIN, ZINC, & STAINLESS STEEL



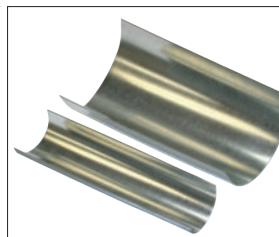
**Piping Products
STRUT ACCESSORIES**

- STRUT, TUBE & CONDUIT CLAMPS
- ANGLE FITTINGS
- CHANNEL NUTS
- POST BASES
- VARIOUS FINISHES



**Piping Products
SANITARY STAINLESS**

- CLAMP FITTINGS
- WELD FITTINGS
- HANGERS
- TUBING



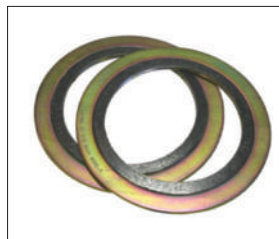
**Piping Products
INSULATION PROTECTION
SHIELDS**

- MSS COMPLIANT - IMPORT
- MSS COMPLIANT - DOMESTIC
- LIGHT DUTY



**Piping Products
PIPE SUPPORT SYSTEMS**

- 50# SUPPORTS
- 150# SUPPORTS
- 300# SUPPORTS
- ADJUSTABLE ELEVATION KITS
- COMPATIBLE WITH FNW HANGER AND STRUT PRODUCTS



**Figure SWG
SPIRAL WOUND GASKETS**

- STAINLESS STEEL WINDINGS
- FLEXIBLE GRAPHITE FILLER - GRAFLEX
- SIZES 1/2"-24"